

FOR SALE

3905 2ND AVENUE, BURNABY

FREESTANDING BUILDING IN BRENTWOOD



FOR MORE INFORMATION PLEASE CONTACT

STATHIS MICHAEL SAVVIS

PERSONAL REAL ESTATE CORPORATION

📞 **604-897-9874**

✉ **savvi@savvirealestate.com**

TRUSS
REAL ESTATE GROUP



STONEHAUS
REALTY

PROPERTY OVERVIEW

SUMMARY

This exceptional commercial property offers the perfect blend of location, versatility, and modern functionality. Renovated in 2012, the office portion is designed to accommodate various business needs, making it ideal for owner-operators or investors. Strategically located near Burnaby's Brentwood District, the property provides easy access to major transportation routes, ensuring excellent connectivity to Vancouver and the surrounding areas. The well-maintained structure is suitable for a wide range of commercial uses, offering flexibility and longterm potential. Whether you're looking to establish your business in a prime location or seeking a valuable addition to your portfolio, this property is an outstanding opportunity. Contact Savvi today to schedule a viewing and explore its full potential!

PROPERTY HIGHLIGHTS



Freestanding Building



Updated Oces



Central Location/Easy Access



Close to Highway



SECOND FLOOR



MAIN FLOOR

PROPERTY OVERVIEW

SALIENT FACTS

LOT SIZE

BUILDING SIZE

± 6,600 SF

PARKING

± 4,344 SF

ZONING

Gated Lot

PROPERTY TAXES

M3

PID

\$28,700.15

LEGAL DESCRIPTION

003-061-647

LOT18,BLOCK34,PLANNWP1222, DISTRICT LOT 117, GROUP 1, NEW WESTMINSTER

LAND DISTRICT

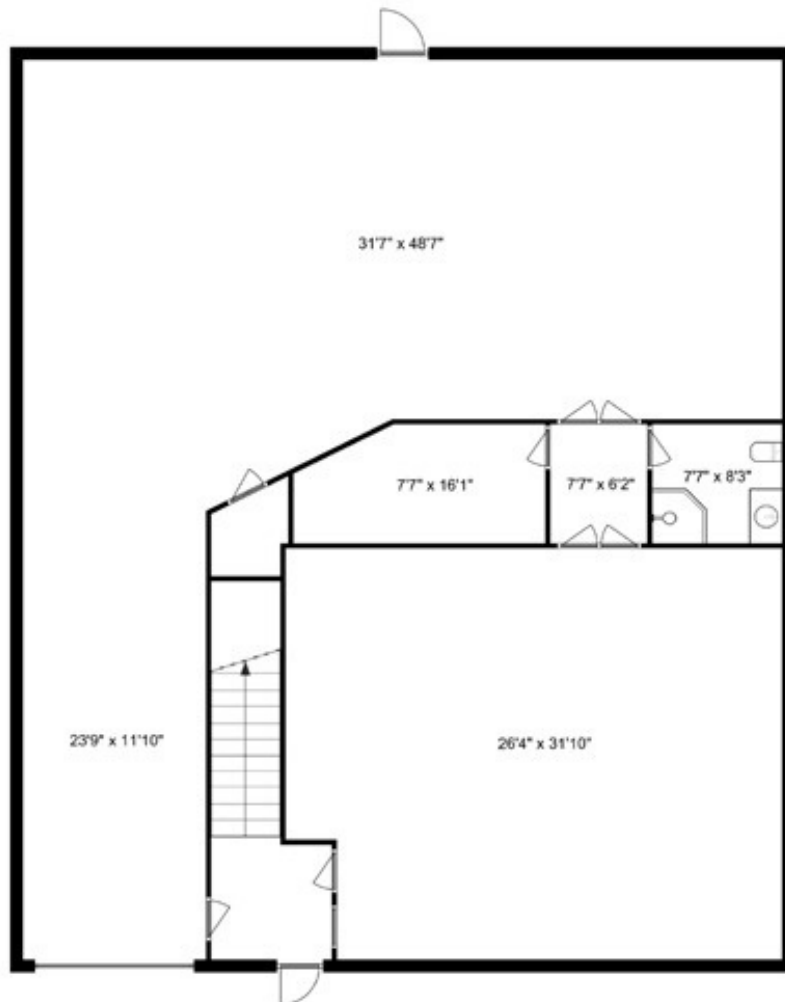
Disclaimer :

Measurements are approximate and shall be verified by the Tenant if deemed important.

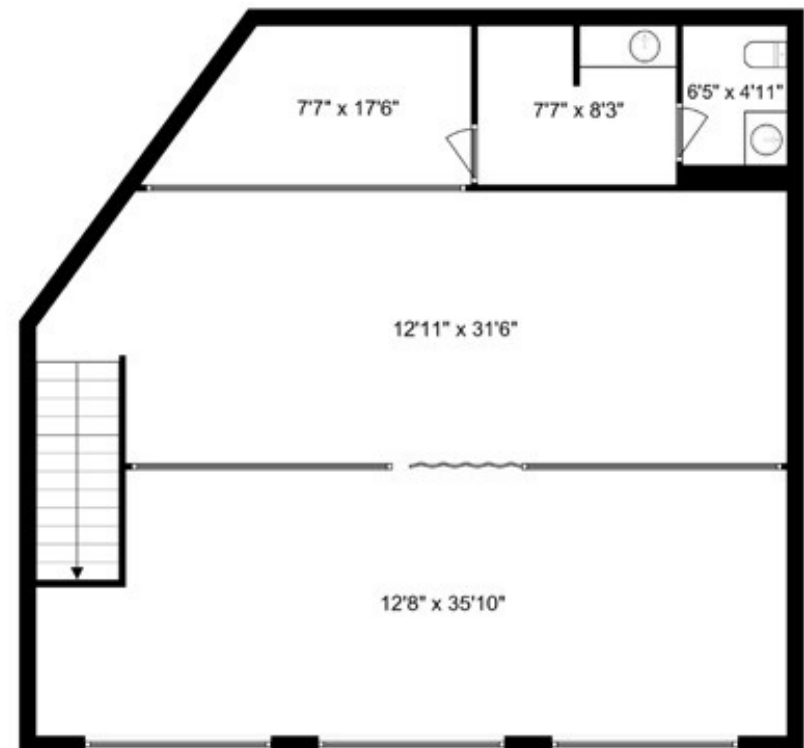


FLOOR PLANS

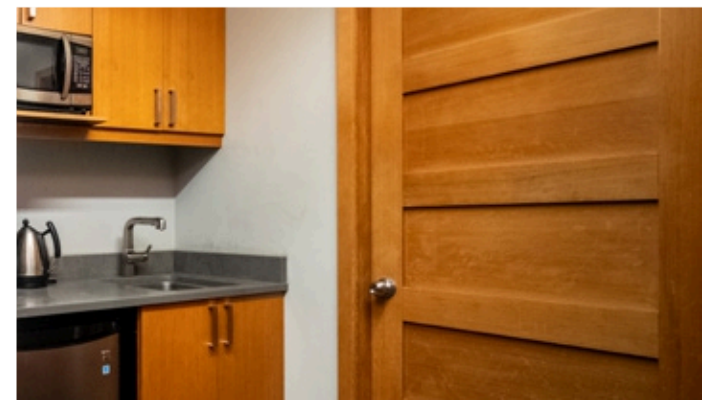
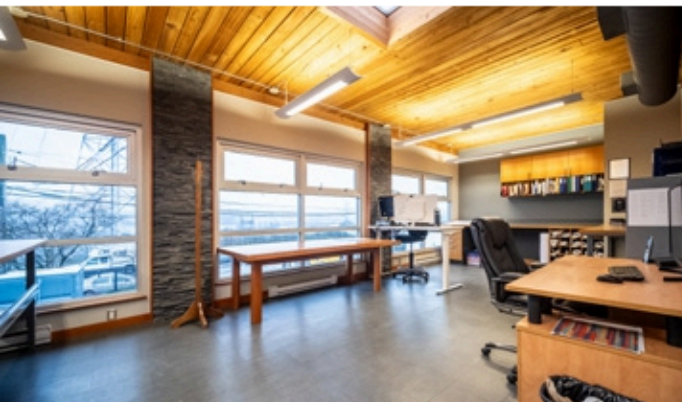
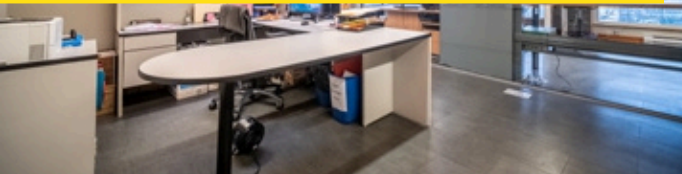
Main Floor



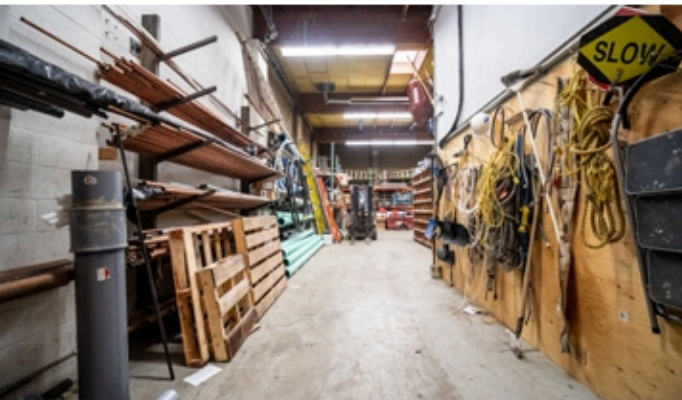
Second Floor



SECOND FLOOR



MAIN FLOOR



LOCATION OVERVIEW

BRENTWOOD

NEIGHBOURHOOD

This exceptional commercial property offers the perfect blend of location, versatility, and modern functionality. Renovated in 2012, the office portion is designed to accommodate various business needs, making it ideal for owner-operators or investors. Strategically located near Burnaby's Brentwood District, the property provides easy access to major transportation routes, ensuring excellent connectivity to Vancouver and the surrounding areas. The well-maintained structure is suitable for a wide range of commercial uses, offering flexibility and longterm potential. Whether you're looking to establish your business in a prime location or seeking a valuable addition to your portfolio, this property is an outstanding opportunity. Contact Savvi today to schedule a viewing and explore its full potential!



FOR SALE

3905 2ND AVENUE, BURNABY

FREESTANDING BUILDING IN BRENTWOOD

TRUSS

REAL ESTATE GROUP



STONEHAUS
REALTY

E.&O.E. This communication is not intended to cause or induce breach of an existing agency agreement. SAVVI REAL ESTATE has prepared this document for the sole purposes of advertising and general information. SAVVI REAL ESTATE and its listing client and/or clients make no guarantees or warranties of any kind, expressed or implied, regarding the information including but not limited to warranties of content, accuracy, completeness, and reliability, and do not accept or assume any responsibility or liability, consequential or direct, for the recipient's reliance upon the information. Any recipient and/or interested party should undertake their own appropriate and independent due diligence and inquiries to the accuracy of the information, which is subject to errors, omissions, and changes, including changes to price or withdrawal, without notice. Sizes are approximate and based on architectural measurements. SAVVI REAL ESTATE and its listing client and/or clients exclude unequivocally all inferred or implied terms, conditions, and warranties arising out of this document and exclude all liability for loss and/or damages arising therefrom. This publication is the copyrighted property of SAVVI REAL ESTATE and its listing client and/or clients.

© 2025 SAVVI REAL ESTATE . All rights reserved.

FOR MORE INFORMATION PLEASE CONTACT
STATHIS MICHAEL SAVVIS

PERSONAL REAL ESTATE CORPORATION

📞 **604-897-9874**

✉ **savvi@savvirealestate.com**

TRUSS

REAL ESTATE GROUP



STONEHAUS
REALTY